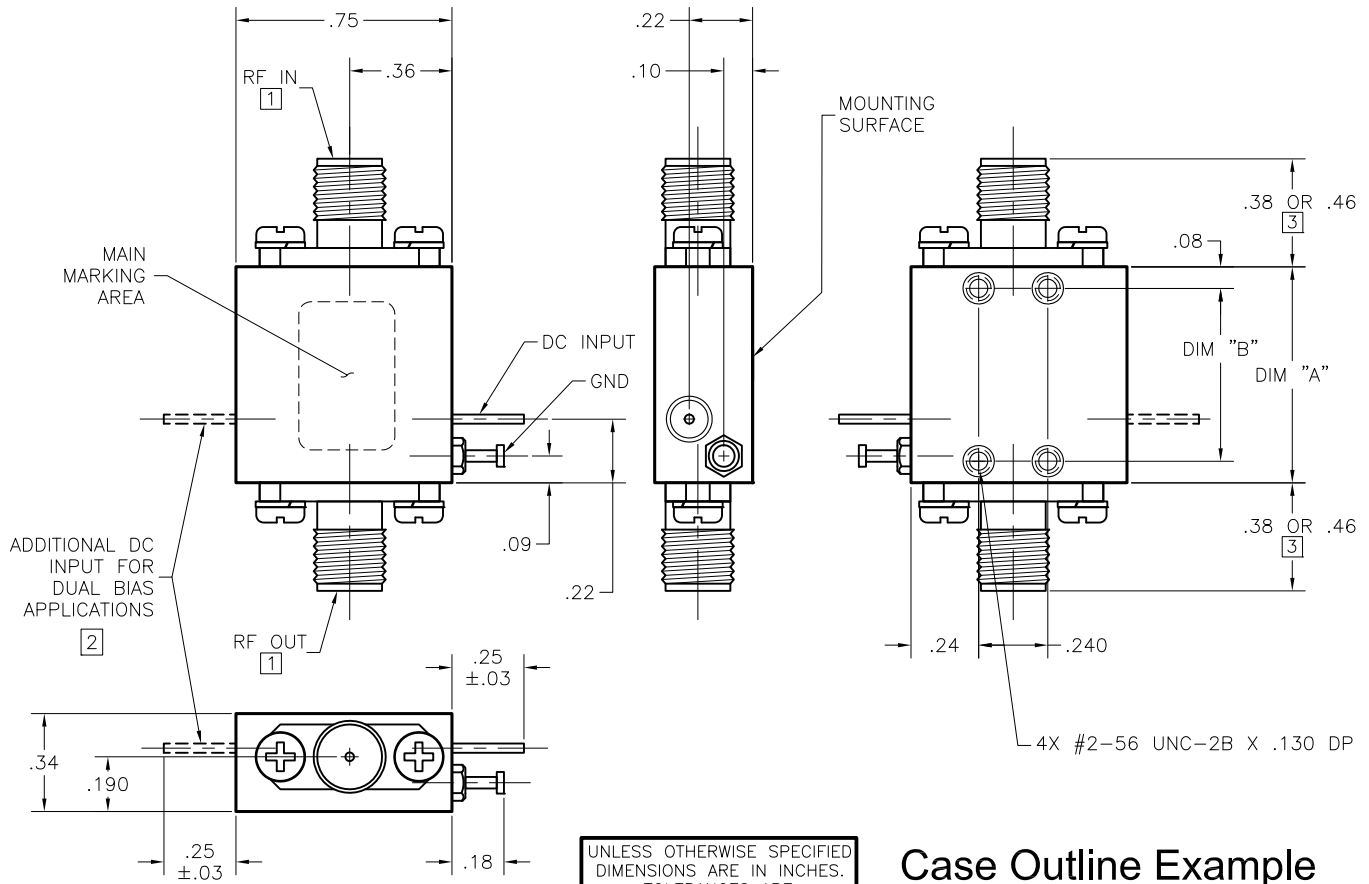


STANDARD CONNECTORIZED AMPLIFIER/MULTIPLIER



UNLESS OTHERWISE SPECIFIED
DIMENSIONS ARE IN INCHES.
TOLERANCES ARE:
.XX ± .02 .XXX ± .005

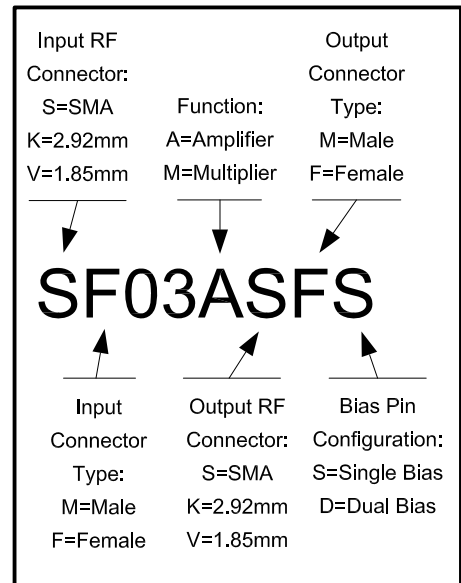
NOTES: (Unless Otherwise Specified)

- 1 RF CONNECTORS ARE SMA, 2.92mm OR 1.85mm FEMALE.
- 2 ONLY USED ON PACKAGE NUMBERS ENDING IN "D".
- 3 CONNECTOR DIMENSIONS:
SMA & 2.92mm FEMALE ARE .38".
1.85mm FEMALE IS .46".

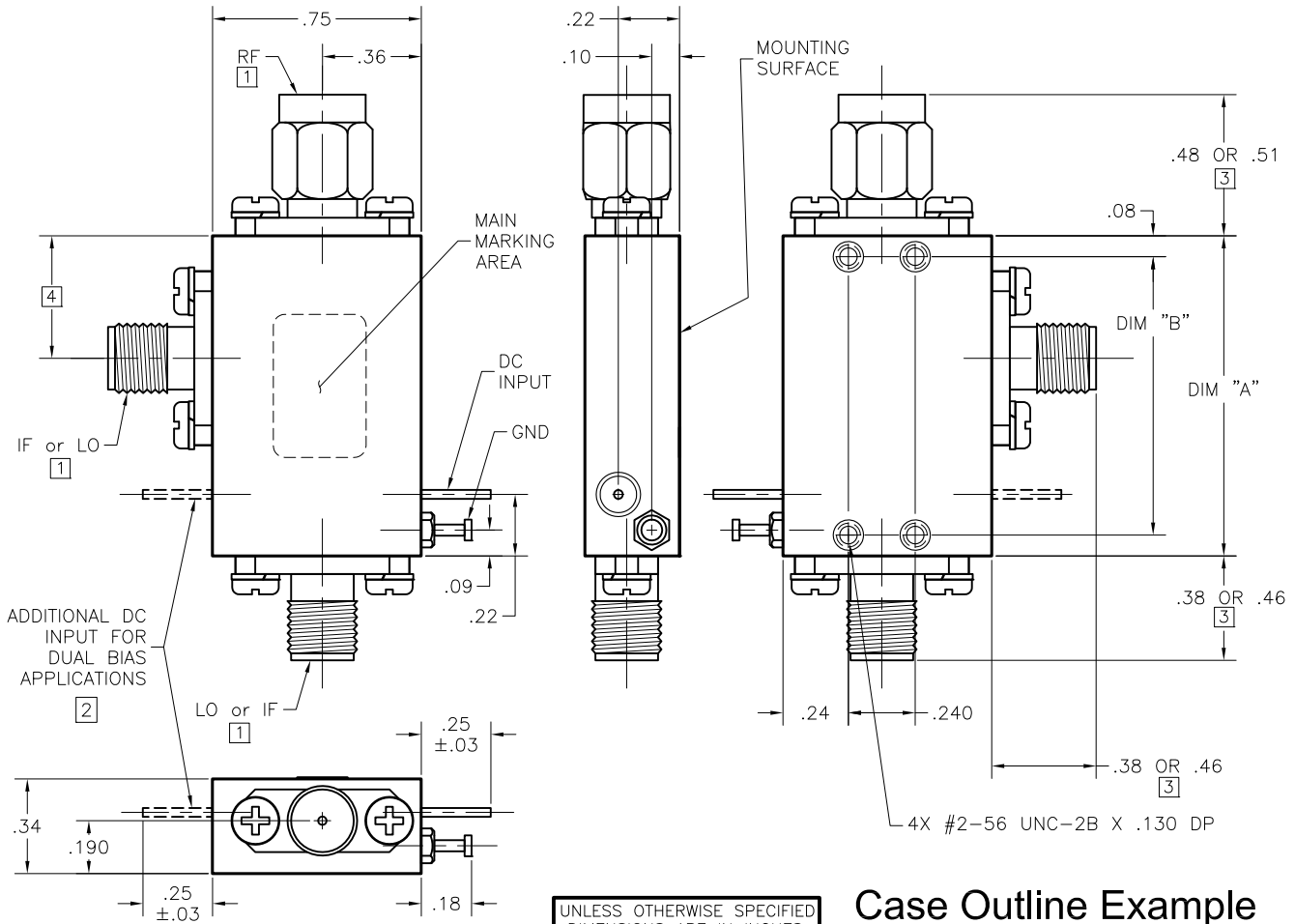
Standard Outline Drawing for Cases with Female Connectors. Male Connectors available upon request. Waveguide options are available for Products operating >18 GHz

| PACKAGE# | DIM "A" | DIM "B" |
|----------|---------|---------|
| __03__ | .75 | .600 |
| __04__ | .95 | .800 |
| __05__ | 1.15 | 1.000 |
| __06__ | 1.35 | 1.200 |
| __07__ | 1.55 | 1.400 |
| __08__ | 1.75 | 1.600 |
| __09__ | 1.95 | 1.800 |
| __10__ | 2.15 | 2.000 |
| __11__ | 2.35 | 2.200 |
| __12__ | 2.55 | 2.400 |
| __13__ | 2.75 | 2.600 |
| __14__ | 2.95 | 2.800 |
| __15__ | 3.15 | 3.000 |

Case Outline Example



STANDARD CONNECTORIZED CONVERTER



NOTES: (Unless Otherwise Specified)

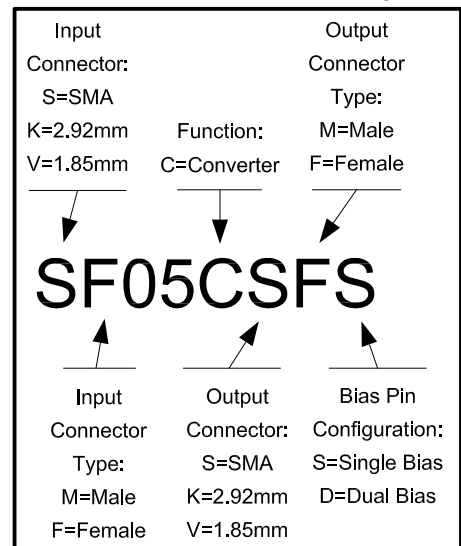
- 1 CONNECTORS ARE SMA, 2.92mm OR 1.85mm FEMALE OR MALE.
- 2 ONLY USED ON PACKAGE NUMBERS ENDING IN "D".
- 3 CONNECTOR DIMENSIONS:
SMA & 2.92mm FEMALE ARE .38".
SMA & 2.92mm MALE ARE .51".
1.85mm FEMALE IS .46".
1.85mm MALE IS .48".
- 4 CONSULT FACTORY FOR LOCATION.

Outline Drawing for Converter Case showing Female & Male Connectors are for Dimensions. Customer to specify Connector options. Waveguide options are available for Products operating >18 GHz

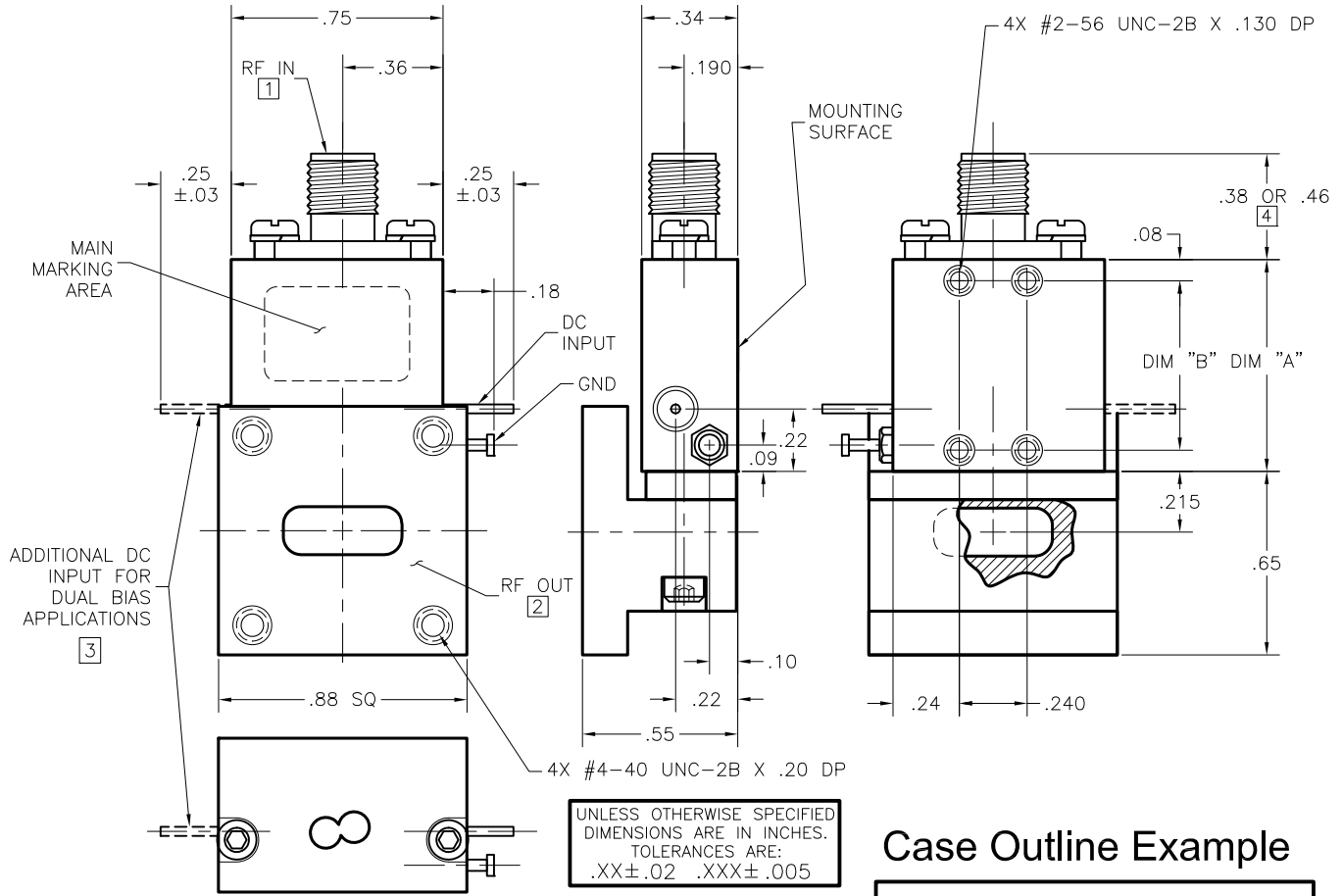
UNLESS OTHERWISE SPECIFIED DIMENSIONS ARE IN INCHES. TOLERANCES ARE:
.XX±.02 .XXX±.005

| PACKAGE# | DIM "A" | DIM "B" |
|----------|---------|---------|
| __05__ | 1.15 | 1.000 |
| __06__ | 1.35 | 1.200 |
| __07__ | 1.55 | 1.400 |
| __08__ | 1.75 | 1.600 |
| __09__ | 1.95 | 1.800 |
| __10__ | 2.15 | 2.000 |
| __11__ | 2.35 | 2.200 |
| __12__ | 2.55 | 2.400 |
| __13__ | 2.75 | 2.600 |
| __14__ | 2.95 | 2.800 |
| __15__ | 3.15 | 3.000 |

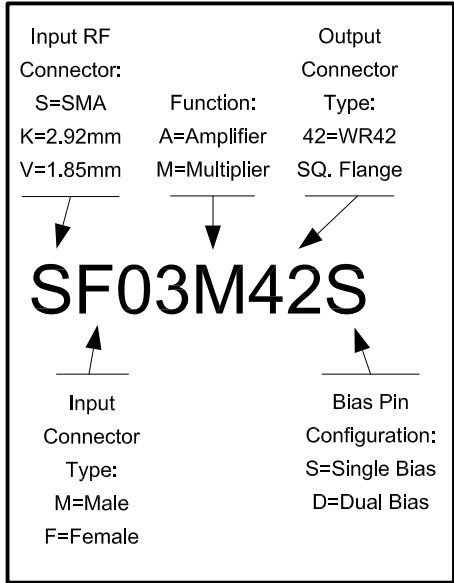
Case Outline Example



RF CONN IN / WR-42 WG SQ. FL. OUT AMPLIFIER/MULTIPLIER



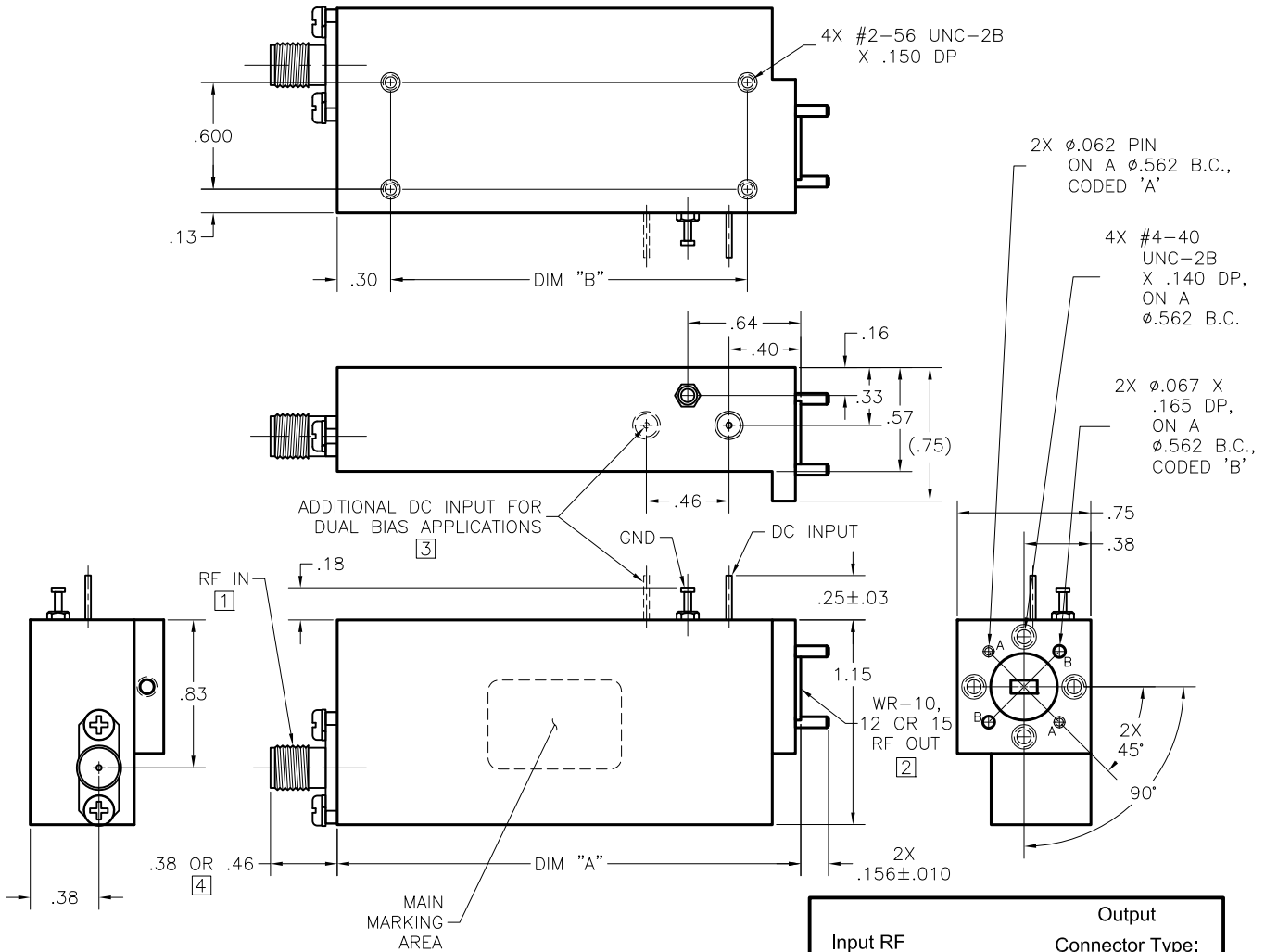
Case Outline Example



| PACKAGE# | DIM "A" | DIM "B" |
|----------|---------|---------|
| __03__ | .750 | .600 |
| __04__ | .950 | .800 |
| __05__ | 1.150 | 1.000 |
| __06__ | 1.350 | 1.200 |
| __07__ | 1.550 | 1.400 |
| __08__ | 1.750 | 1.600 |
| __09__ | 1.950 | 1.800 |
| __10__ | 2.150 | 2.000 |
| __11__ | 2.350 | 2.200 |
| __12__ | 2.550 | 2.400 |
| __13__ | 2.750 | 2.600 |
| __14__ | 2.950 | 2.800 |
| __15__ | 3.150 | 3.000 |

- NOTES: (Unless Otherwise Specified)
- [1] RF INPUT CONNECTOR IS SMA, 2.92mm OR 1.85mm FEMALE.
 - [2] RF OUTPUT CONNECTOR IS WR-42 WAVEGUIDE, SQUARE FLANGE.
 - [3] ONLY USED ON PACKAGE NUMBERS ENDING IN "D".
 - [4] CONNECTOR DIMENSIONS: SMA & 2.92mm FEMALE ARE .38". 1.85mm FEMALE IS .46".

RF CONNECTOR IN / WR-08/10/12/15 WG OUT MULTIPLIER



NOTES: (Unless Otherwise Specified)

- [1] RF CONNECTORS ARE SMA, 2.92mm OR 1.85mm FEMALE.
- [2] RF OUTPUT CONNECTORS ARE WR-08 (UG-387/U-M FLANGE), WR-10 (UG-387/U-M FLANGE), WR-12 (UG-387/U FLANGE) OR WR-15 (UG-385/U FLANGE) WG.
- [3] ONLY USED ON PACKAGE NUMBERS ENDING IN "D".
- [4] CONNECTOR DIMENSIONS: SMA & 2.92mm FEMALE ARE .38". 1.85mm FEMALE IS .46".

UNLESS OTHERWISE SPECIFIED DIMENSIONS ARE IN INCHES. TOLERANCES ARE: .XX \pm .02 .XXX \pm .005

Case Outline Example

| PACKAGE# | DIM "A" | DIM "B" |
|----------|---------|---------|
| __06__ | 1.73 | 1.125 |
| __10__ | 2.61 | 2.005 |
| __13__ | 3.21 | 2.605 |

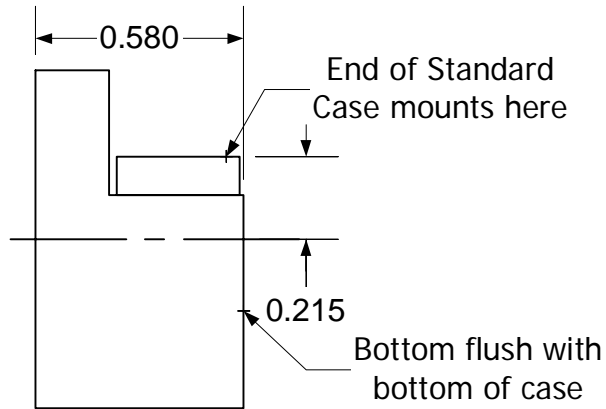
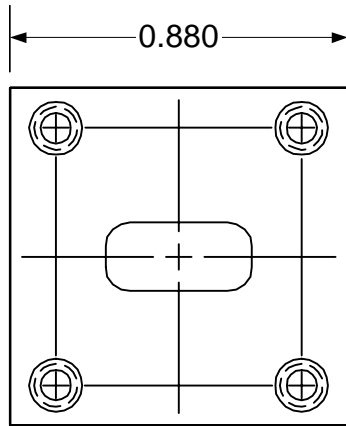
| Input RF | | Output | |
|------------|----------|-----------------|----------|
| Connector: | S=2.92mm | Connector Type: | 08=WR-08 |
| K=2.92mm | V=1.85mm | Function: | 10=WR-10 |
| | | M=Multiplier | 12=WR-12 |
| | | | 15=WR-15 |

SF10M15S

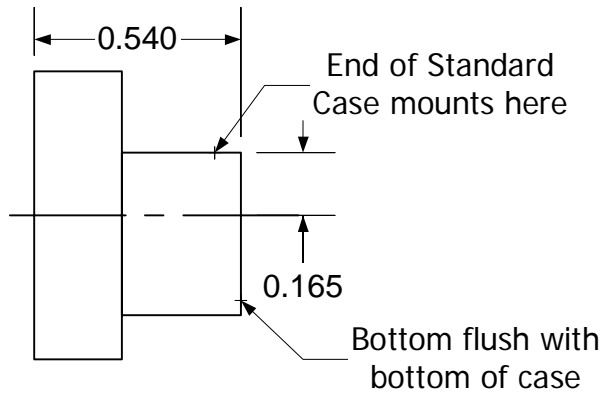
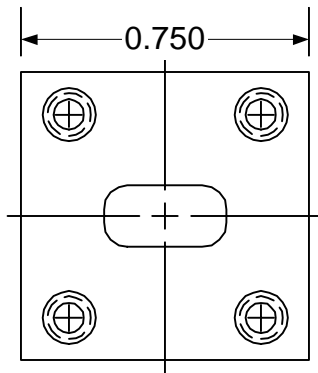
| Input Connector Type: | Bias Pin Configuration: |
|-----------------------|-------------------------|
| M=Male | S=Single Bias |
| F=Female | D=Dual Bias |

Waveguide Connector Options

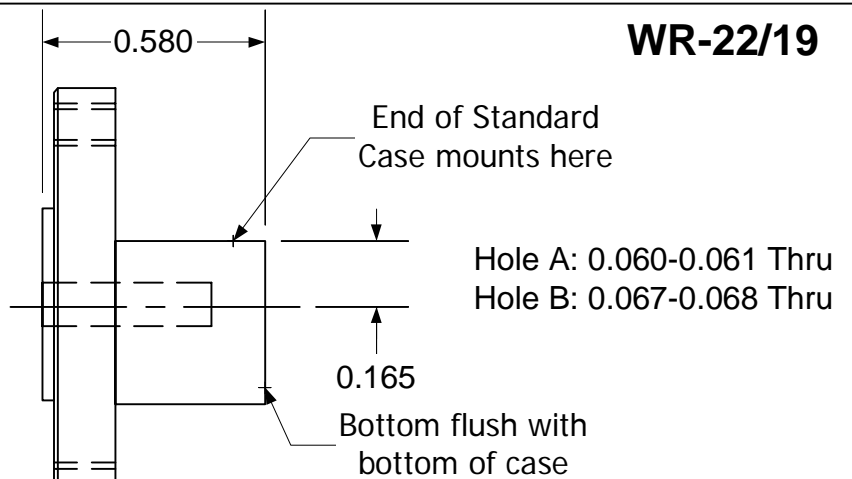
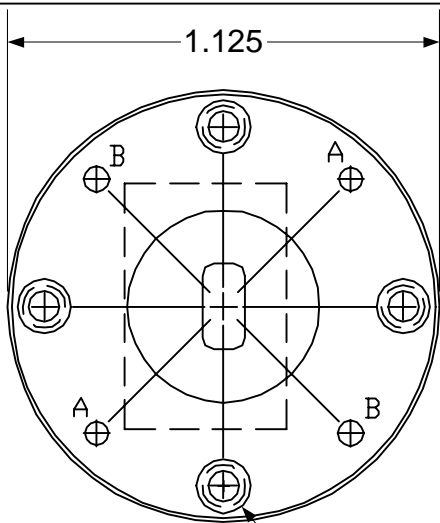
WR-42



WR-28



WR-22/19

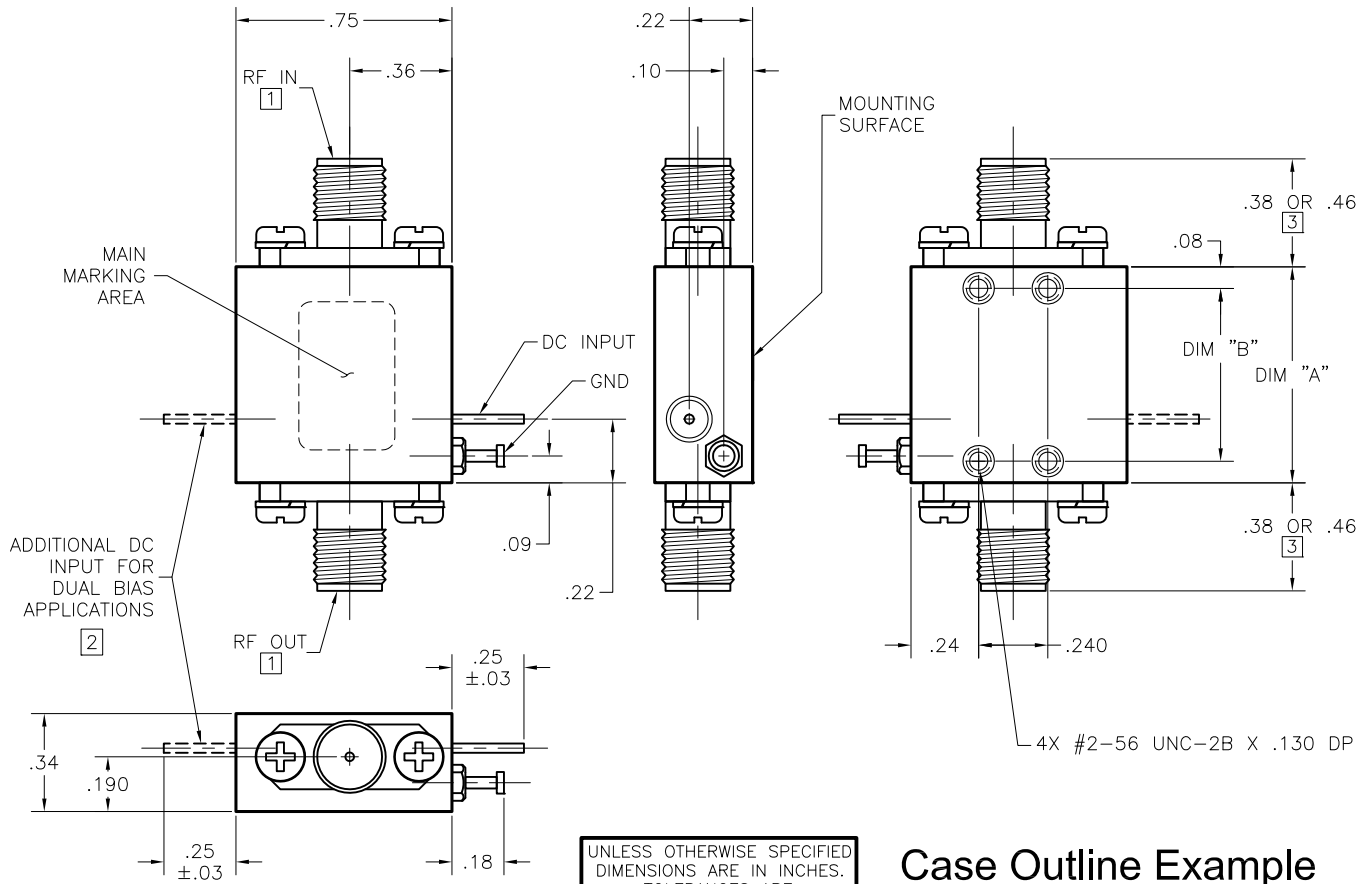


4X 4-40 UNC-2B Thru

Other Waveguide sized available upon request.
Square versions of WR22 and WR19 available.

Dimensions in Inches

STANDARD CONNECTORIZED AMPLIFIER/MULTIPLIER



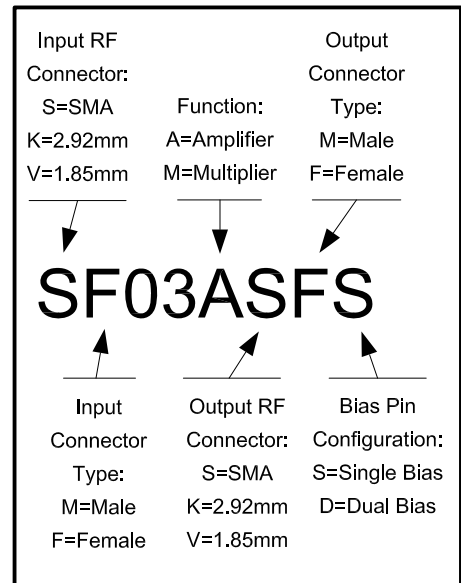
NOTES: (Unless Otherwise Specified)

- 1 RF CONNECTORS ARE SMA, 2.92mm OR 1.85mm FEMALE.
- 2 ONLY USED ON PACKAGE NUMBERS ENDING IN "D".
- 3 CONNECTOR DIMENSIONS: SMA & 2.92mm FEMALE ARE .38". 1.85mm FEMALE IS .46".

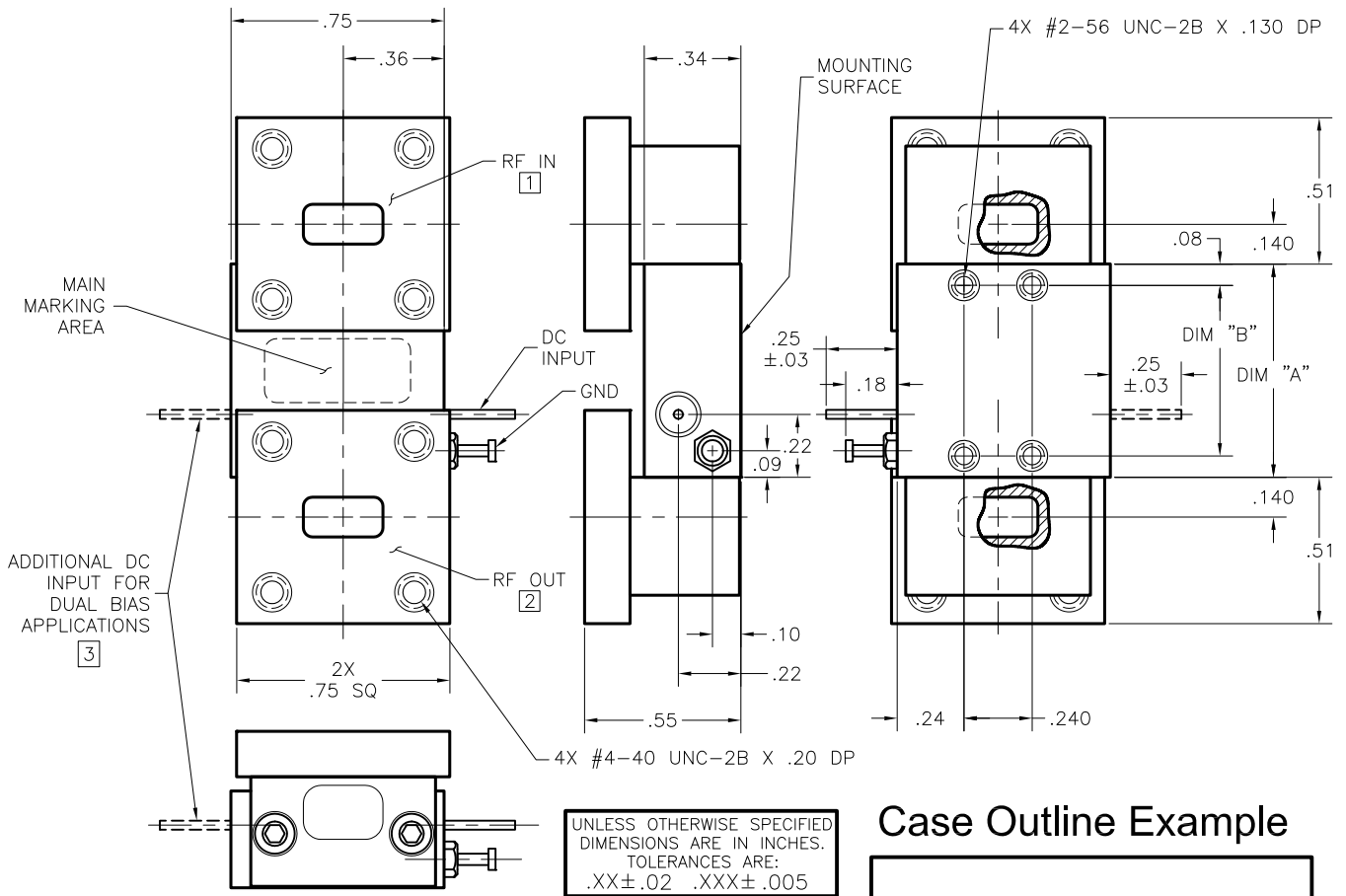
Standard Outline Drawing for Cases with Female Connectors. Male Connectors available upon request. Waveguide options are available for Products operating >18 GHz

| PACKAGE# | DIM "A" | DIM "B" |
|----------|---------|---------|
| __03__ | .75 | .600 |
| __04__ | .95 | .800 |
| __05__ | 1.15 | 1.000 |
| __06__ | 1.35 | 1.200 |
| __07__ | 1.55 | 1.400 |
| __08__ | 1.75 | 1.600 |
| __09__ | 1.95 | 1.800 |
| __10__ | 2.15 | 2.000 |
| __11__ | 2.35 | 2.200 |
| __12__ | 2.55 | 2.400 |
| __13__ | 2.75 | 2.600 |
| __14__ | 2.95 | 2.800 |
| __15__ | 3.15 | 3.000 |

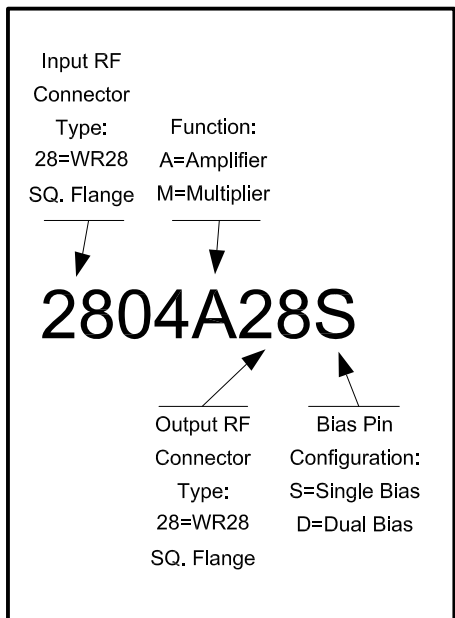
Case Outline Example



WR-28 WG SQUARE FLANGE IN / OUT AMPLIFIER/MULTIPLIER



Case Outline Example

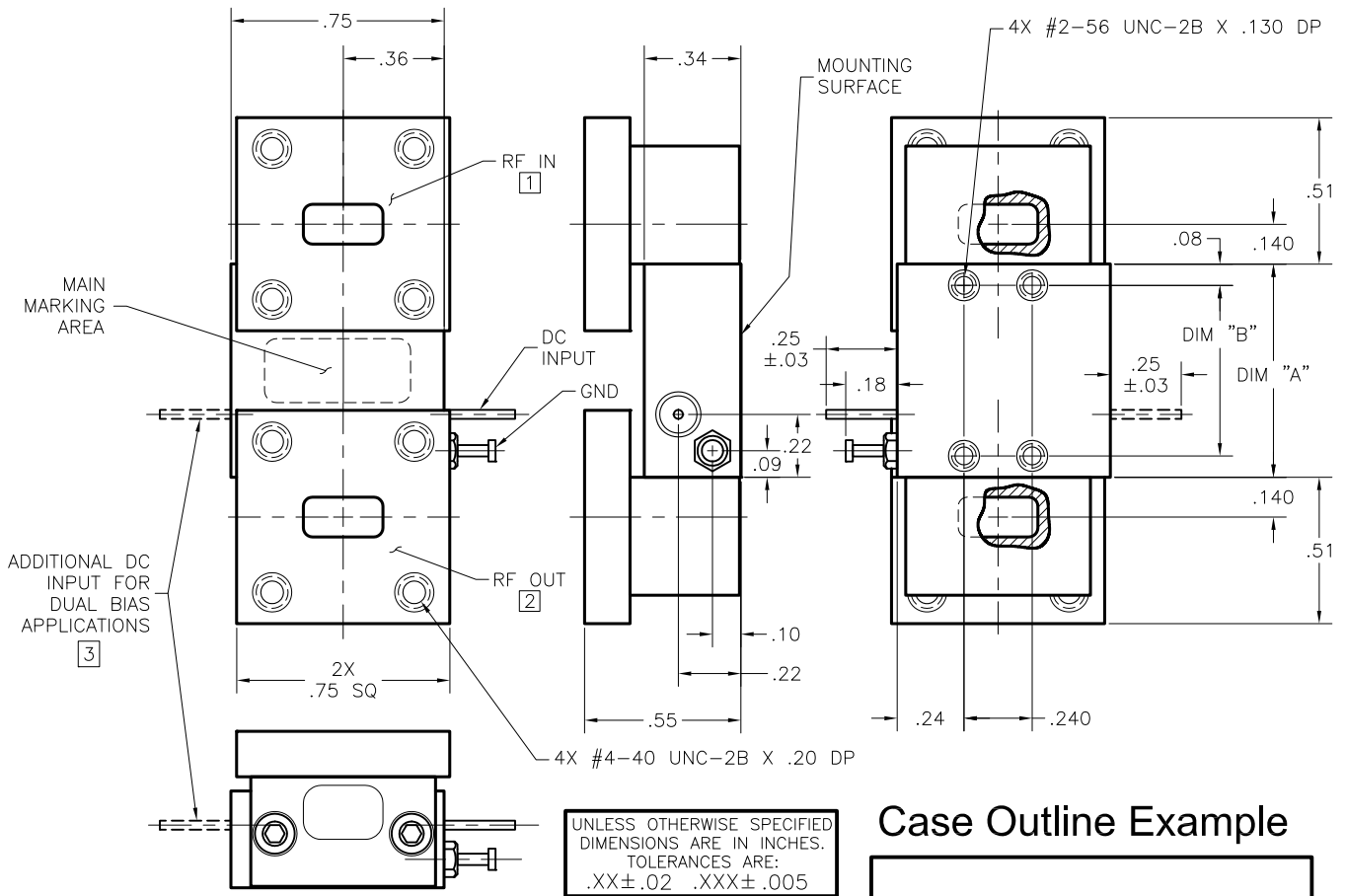


| PACKAGE# | DIM "A" | DIM "B" |
|----------|---------|---------|
| __03__ | .750 | .600 |
| __04__ | .950 | .800 |
| __05__ | 1.150 | 1.000 |
| __06__ | 1.350 | 1.200 |
| __07__ | 1.550 | 1.400 |
| __08__ | 1.750 | 1.600 |
| __09__ | 1.950 | 1.800 |
| __10__ | 2.150 | 2.000 |
| __11__ | 2.350 | 2.200 |
| __12__ | 2.550 | 2.400 |
| __13__ | 2.750 | 2.600 |
| __14__ | 2.950 | 2.800 |
| __15__ | 3.150 | 3.000 |

NOTES: (Unless Otherwise Specified)

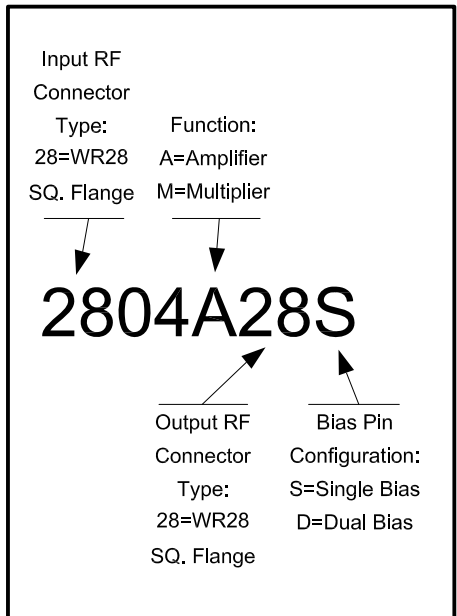
- 1 RF INPUT CONNECTOR IS WR-28 WAVEGUIDE, SQUARE FLANGE.
- 2 RF OUTPUT CONNECTOR IS WR-28 WAVEGUIDE, SQUARE FLANGE.
- 3 ONLY USED ON PACKAGE NUMBERS ENDING IN "D".

WR-28 WG SQUARE FLANGE IN / OUT AMPLIFIER/MULTIPLIER



UNLESS OTHERWISE SPECIFIED
DIMENSIONS ARE IN INCHES.
TOLERANCES ARE:
.XX±.02 .XXX±.005

Case Outline Example

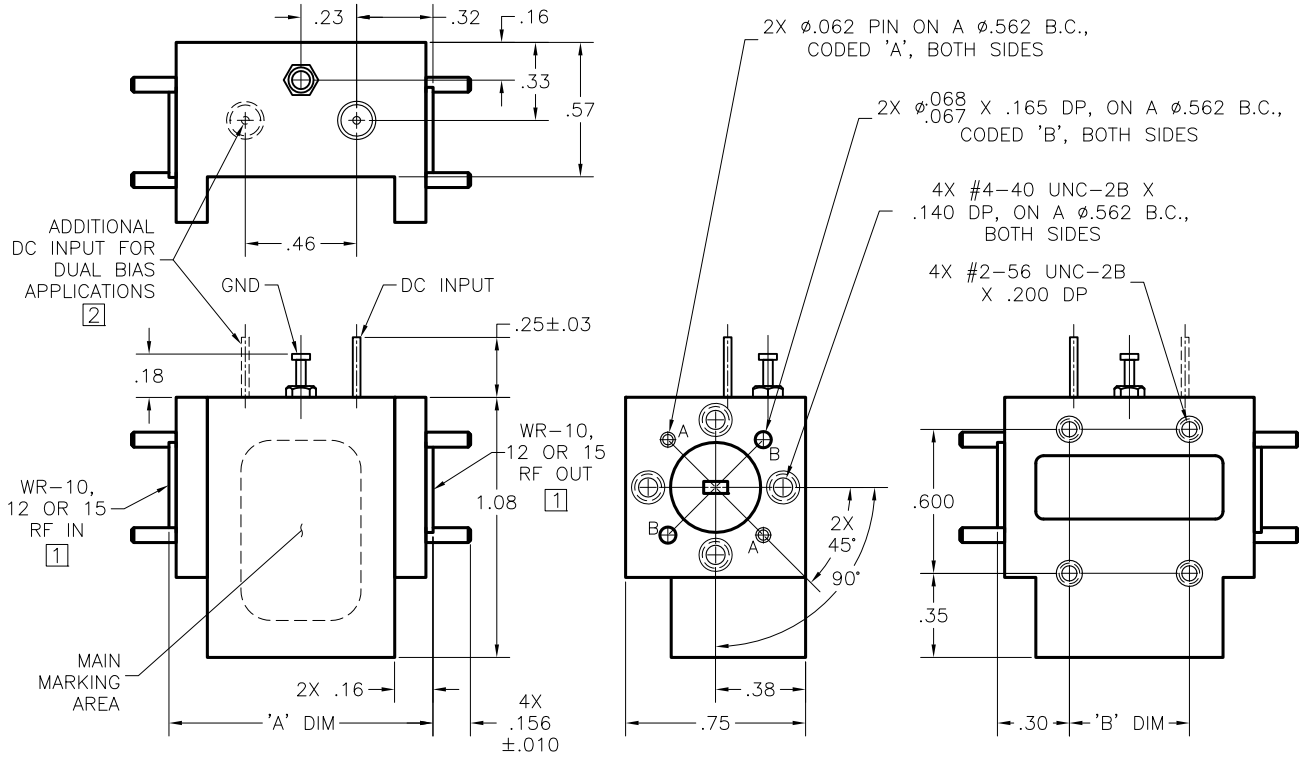


NOTES: (Unless Otherwise Specified)

- 1 RF INPUT CONNECTOR IS WR-28 WAVEGUIDE, SQUARE FLANGE.
- 2 RF OUTPUT CONNECTOR IS WR-28 WAVEGUIDE, SQUARE FLANGE.
- 3 ONLY USED ON PACKAGE NUMBERS ENDING IN "D".

| PACKAGE# | DIM "A" | DIM "B" |
|----------|---------|---------|
| __03__ | .750 | .600 |
| __04__ | .950 | .800 |
| __05__ | 1.150 | 1.000 |
| __06__ | 1.350 | 1.200 |
| __07__ | 1.550 | 1.400 |
| __08__ | 1.750 | 1.600 |
| __09__ | 1.950 | 1.800 |
| __10__ | 2.150 | 2.000 |
| __11__ | 2.350 | 2.200 |
| __12__ | 2.550 | 2.400 |
| __13__ | 2.750 | 2.600 |
| __14__ | 2.950 | 2.800 |
| __15__ | 3.150 | 3.000 |

WR-08/10/12/15 WG IN / OUT AMPLIFIER



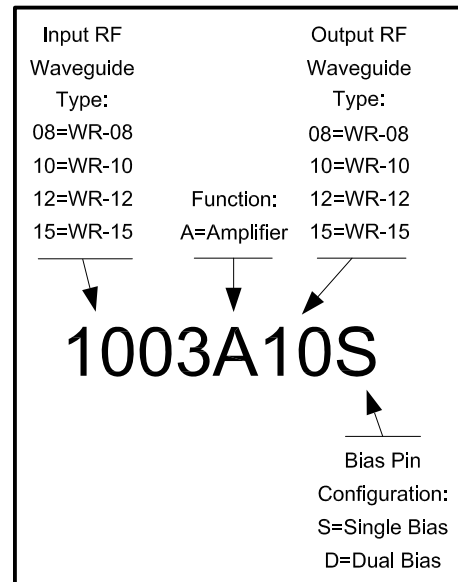
UNLESS OTHERWISE SPECIFIED
DIMENSIONS ARE IN INCHES.
TOLERANCES ARE:
.XX±.02 .XXX±.005

NOTES: (Unless Otherwise Specified)

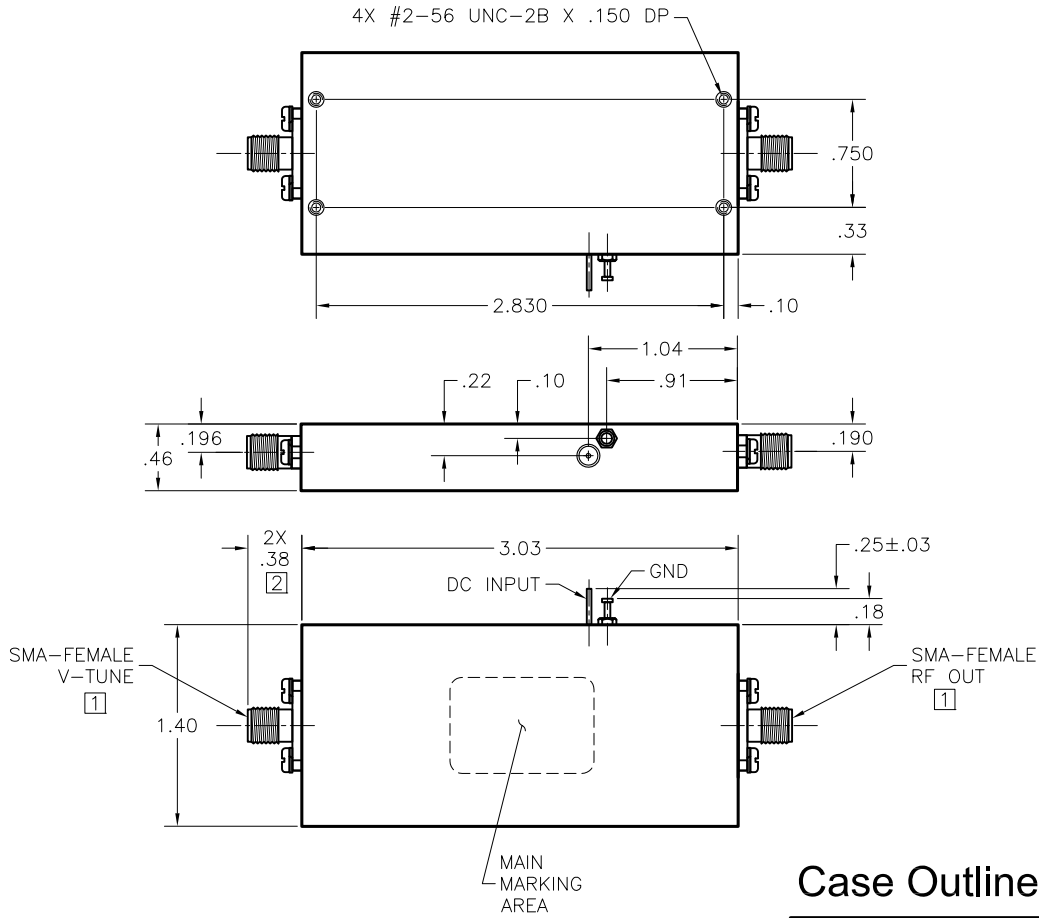
- [1] RF INPUT AND OUTPUT CONNECTORS ARE WR-08 (UG-387/U-M FLANGE), WR-10 (UG-387/U-M FLANGE), WR-12 (UG-387/U FLANGE) OR WR-15 (UG-385/U FLANGE).
- [2] ONLY USED ON PACKAGE NUMBERS ENDING IN "D".

| PACKAGE# | DIM "A" | DIM "B" |
|----------|---------|---------|
| __01__ | 1.100 | .500 |
| __02__ | 1.300 | .700 |
| __03__ | 1.500 | .900 |
| __04__ | 1.700 | 1.100 |
| __05__ | 1.900 | 1.300 |
| __06__ | 2.100 | 1.500 |
| __07__ | 2.300 | 1.700 |
| __08__ | 2.500 | 1.900 |
| __09__ | 2.700 | 2.100 |
| __10__ | 2.900 | 2.300 |
| __11__ | 3.100 | 2.500 |
| __12__ | 3.300 | 2.700 |
| __13__ | 3.500 | 2.900 |
| __14__ | 3.700 | 3.100 |
| __15__ | 3.900 | 3.300 |

Case Outline Example



RF CONNECTOR V-CONTROL / RF CONNECTOR OUT VCO



UNLESS OTHERWISE SPECIFIED
DIMENSIONS ARE IN INCHES.
TOLERANCES ARE:
.XX ± .02 .XXX ± .005

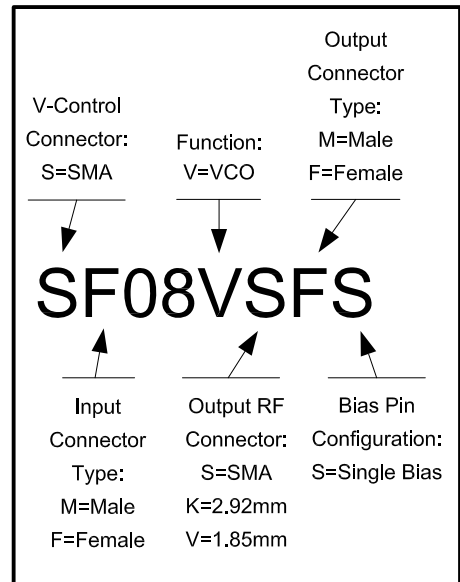
NOTES: (Unless Otherwise Specified)

[1] RF INPUT & OUTPUT CONNECTORS ARE SMA OR 2.92mm FEMALE.

[2] CONNECTOR DIMENSIONS:
SMA & 2.92mm FEMALE ARE .38"

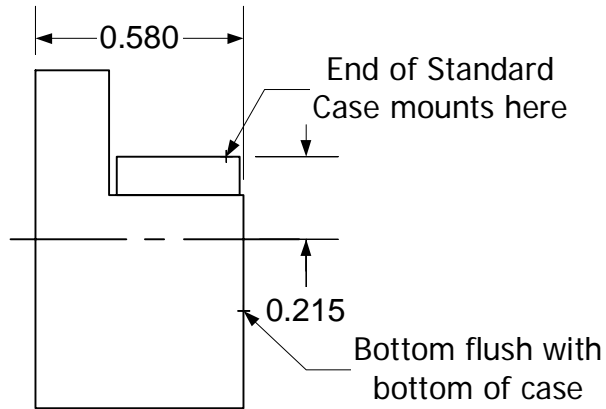
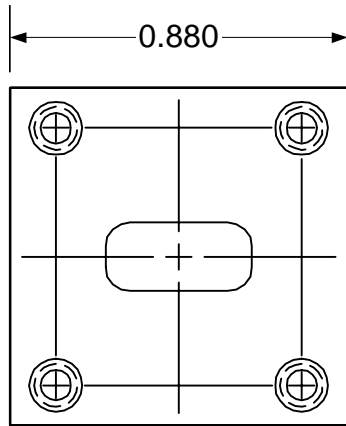
VCO Outline Drawing for Cases with Female Connectors.
Male Connectors available upon request.

Case Outline Example

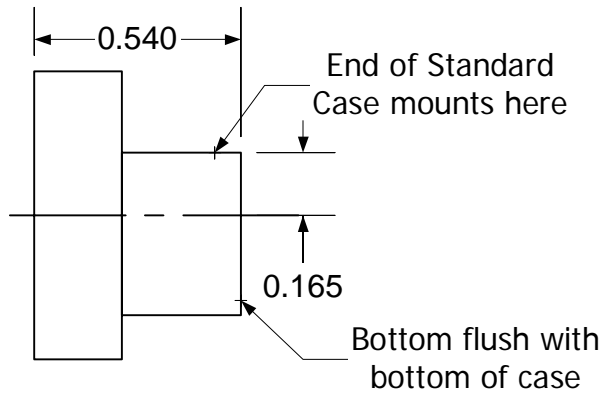
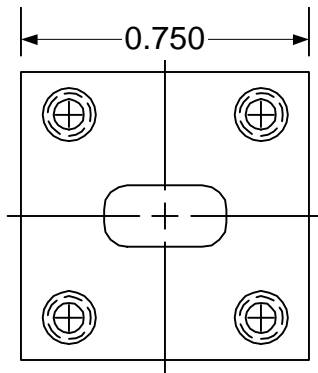


Waveguide Connector Options

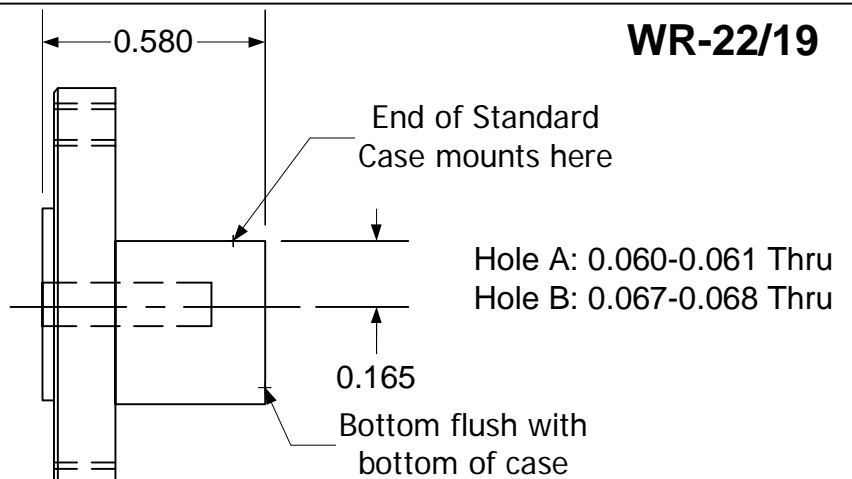
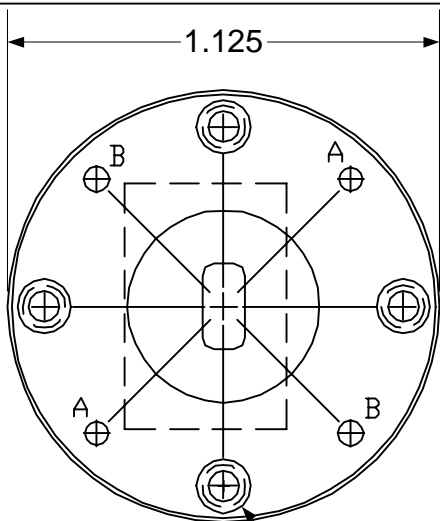
WR-42



WR-28



WR-22/19



4X 4-40 UNC-2B Thru

Other Waveguide sized available upon request.
Square versions of WR22 and WR19 available.

Dimensions in Inches